



**Black Country
Women's Aid**

we listen, we support, we care

Annual Report 2019-20

BCWA
Black Country Women's Aid
**Swiss Alps
Charity Climb**
August 2019



The Cedar Centre
Sandwell



Black Country Women's Aid

Annual Report 2019-20

Black Country Women's Aid is a leading regional charity which supports victims of violence across the West Midlands.

We offer sensitive and holistic **support** services which each year help thousands of **victims of abuse to escape from violence**, cope with trauma and rebuild their lives. We place victims' voices at the heart of our work and we constantly develop our services in response to needs in our communities.

Our services include support for both adult and child victims of domestic abuse, stalking, sexual violence, exploitation and international human trafficking, and women in the criminal justice system.

First established over 30 years ago in Sandwell, we have grown from a small local refuge provider to a diverse organisation which works across Sandwell, Dudley, Walsall, Wolverhampton and Birmingham.

Contents:

Chairperson's Report	page: 3
Chief Executive Officer's Report	page: 4
Domestic Abuse Services	page: 6
Stalking Support Services	page: 8
Rape and Sexual Violence Services	page: 10
Accommodation Services	page: 12
Children and Young People's Services	page: 14
Women's Justice Services	page: 16
Therapeutic Services	page: 17
Modern Slavery Support Services	page: 18
BCWA's team	page: 20
Corporate Services	page: 22
Fundraising	page: 24
Financial Reports	page: 27

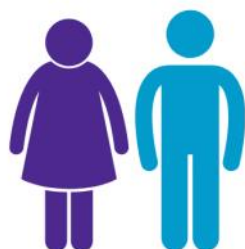


In 2019/20, we supported

9194

people.

8135 adults



1059 children



6148

victims of domestic abuse in the community



290

women with children in refuge or with floating support



607

victims of stalking



245

victims of modern slavery and international human trafficking



780

children and young people who were victims of rape, domestic abuse and exploitation



683

victims of rape and childhood sexual abuse



441

female offenders, women with complex needs, and women involved in sex work





Introduction from the Chair:

Karen Dowman

What an unprecedented year 2019/20 has been!

2019/20 has been a busy year where Black Country Women's Aid continued to work with partners across the region and nationally to reach more victims of violence and abuse. Who would have thought the year would end with the disruption to daily life that COVID 19 brought us. As the nation entered into lockdown we were concerned that this would have a devastating effect on the lives of victims of abuse, and it did.

We continue to see an increase in the number of people accessing BCWA and the organisation works hard to secure funds to deliver essential community services.

Working together is vital and we believe that no one single agency can tackle abuse on their own: together so much can be achieved.

Awareness-raising, training and sharing practice is vital. Better use of social media and other platforms enables a greater reach. We know we must stay on top of this to ensure that we communicate with all our communities in this 24/7 culture. There are still too many deaths as a result of domestic abuse for us not to do something. Learning from DHRs is essential so that we can strengthen the systems and continue to build confidence in those that feel that they do not have a voice. The recognition of coercive control marks a cultural change in our understanding of domestic abuse across the partnership and improve responses. For too long there has been a disproportional focus on physical violence



Karen Dowman (centre) with BCWA senior management team

and we know, because victims have told us that this does not tell the story of the real impacts of the daily and ongoing control that they experience.

I continue to see an ambitious dynamic charity that hasn't lost any of the enthusiasm, energy and ambition to help women and children experiencing violence and abuse despite all the challenges they face. We know we don't do on our own. BCWA is supported by a dedicated and committed staff team, statutory and voluntary sector partners who work together, businesses that want to improve the lives of people within their community and generous donors who provide additional support in the way of funds, donations and essential items for people who often have very little. I thank them all.

This report provides only a snapshot of a very busy year but gives you some insight into the activities and services BCWA deliver. Enjoy the read!

Tribute to Janet Ayliffe, BCWA Trustee (2009-2020)

In December 2019 we received news that one of our trustees sadly passed away.

Janet had been a part of the Sandwell charity sector for many years. A scientist by training, Janet shared a passion for the community and wanting to help people when she moved to the Black Country with her husband Professor Graham Ayliffe. She used her skills and talents by bringing people together across many sectors. Our first connection with Janet was when she worked at Sandwell Citizens Advice Bureau (CAB) and latterly as the District Manager for Sandwell CAB. She sat on the CAB National Policy Advisory Board and challenged many policies where women and children

would be left disadvantaged. She had an interest in housing and became a trustee, and later vice-chair, of BCWA. Janet provided a valuable insight into housing and assisted the development of further accommodation for women and children needing refuge. Janet was a keen gardener, an excellent cook and an environmental campaigner.

In dedication to Janet, BCWA will be developing a memorial garden as part of the modern slavery new development due for completion in 2021.

On behalf of BCWA we thank Janet for her hard work and commitment to improving the lives of people in the Black Country. She will be sadly missed.



Chief Executive Officer's Report

Sara Ward

We have seen another busy year, with an increase in the number of victims of violence and abuse needing help and support. We know that many women who experience domestic violence also face other forms of violence such as sexual violence and exploitation; and for some, this is part of a lifetime of abuse. It is vital that we understand how it impacts on their lives, their children's lives and the whole of society.

We work hard to make sure that we have the right services in the right place to help all victims. I am pleased that our services reach out to women in the Black Country who are in the criminal justice system as offenders, as sex workers, presenting with complex needs, experiencing street homelessness, substance misuse to name a few. Many feel unseen by mainstream services. We see them and are here for them. This report outlines all the services that we provide to help all victims of abuse and the excellent committed staff that reach out.

I am thankful to our strategic partners who provide a space for us to stand together in this continued fight to combat violence and abuse. I have seen in the many years as CEO partnership spaces progress significantly and value the voice of the victim that we bring to the table. It is only by working together that we will challenge this abhorrent crime. I am extremely thankful

for the commitment of our loyal staff and volunteers, including Black Country Women's Aid Board of Trustees, without whom we could not have supported and kept safe so many women and children. Thank you also to all our generous donors and community partners who we work with to make change happen.



Leading BCWA is an honour and a privilege; as I enter my 20th year as CEO I look back on the changes that have happened in that time and things have transformed and improvements made beyond belief; it shouldn't take another 20 years to get it right!

We are no longer a single voice, we are heard, victims are listened to and partners are working together. We stand stronger together.

We continue to have some challenges ahead. Our strategy over the next 10 years is to build resilience within the organisation, reach out to more victims of abuse and create an organisation that delivers to the highest standard. Why? Because victims deserve the best.

BCWA achieves Women's Aid National Quality Standard

Early in 2020 we were very proud to be awarded the Women's Aid National Quality Standard, demonstrating the high standard of our support for survivors of domestic abuse and their children.

The Women's Aid National Quality Standards are a set of accredited criteria through which dedicated specialist services addressing domestic violence perpetrated against women and children can evidence their quality. The standards were developed by Women's Aid, the national domestic violence charity that co-ordinates and supports an England-wide network of over 250 local services working to end

domestic violence against women and children.

The assessment panel examined a range of evidence from across our range of refuge and community services for women and children. They particularly commended BCWA for our support for women involved in sex work and those trafficked into the sex industry, and for our work with professionals raising awareness of abuse amongst older women.





**Black Country
Women's Aid**

we listen, we support, we care

REGIONAL OVERVIEW OF SERVICES: 2019-20

West Midlands-wide services

Modern slavery

- Refuge and outreach support for survivors of modern slavery
- Community engagement for women forced into sexual exploitation

Stalking

- West Midlands Stalking Support Service

Black-Country-wide services

Rape and sexual violence

- Independent Sexual Violence Advice (ISVA) service

Children and young people

- Our Future: domestic violence school support
- Young People's Advocates: sexual exploitation and gang involvement
- Children's sexual violence support services

Women's justice

- Red Project: support for sex workers

Therapeutic services

- Specialist counselling for victims of rape and sexual abuse

Walsall

Domestic violence and abuse

- Independent Domestic Violence Advice (IDVA) service: high-risk
- Domestic abuse advocacy: medium-risk
- IRIS project with GP surgeries

Children and young people

- Support for child witnesses of domestic abuse



The Cedar Centre
Walsall

Sandwell

Domestic violence and abuse

- Independent Domestic Violence Advice (IDVA) service: high-risk
- Domestic abuse advocacy linked to Early Help (medium/standard-risk)
- IRIS project with GP surgeries
- Domestic abuse support in A&E

Accommodation services

- Domestic abuse refuge and dispersed accommodation

Children and young people

- Support for child witnesses of domestic abuse

Women's justice

- Mariposa Project: programmes for female offenders
- New Chance: early intervention for women in the criminal justice system



The Cedar Centre
Sandwell

Dudley

Domestic violence and abuse

- IDVA Service (high-risk)
- IRIS project with GP surgeries
- Domestic abuse support in A&E

Women's justice

- Mariposa Project: programmes for female offenders
- New Chance: early intervention for women in the criminal justice system



The Cedar Centre
Dudley

Birmingham

Women's justice

- Mariposa Project: programmes for female offenders



The Cedar Centre
Birmingham



Domestic Abuse Services

BCWA supports victims of domestic abuse in the community at all risk levels in Sandwell, Walsall and Dudley, with services commissioned by Sandwell Council, Walsall Council, and Dudley Safe and Sound.

Independent support

Our domestic abuse support teams are made up of IDVAs (independent domestic violence advisers and DAAs (domestic abuse advocates), who work with women and men who are at risk of harm from intimate partners, ex-partners or family members, aiming to securing their safety and that of their children.

We offer a range of emotional and practical support, including:

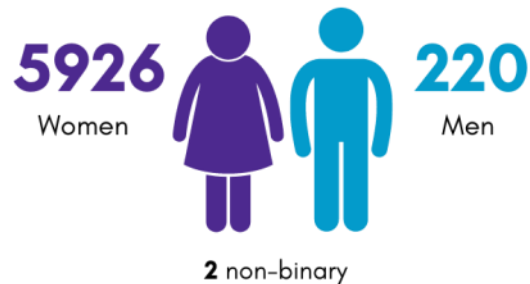
- independent advice and advocacy;
- risk assessments and safety planning;
- support through the criminal justice system;
- information on legal and civil remedies;
- working with other agencies to maximise a victim's safety;
- representing high-risk victims at MARAC (Multi-Agency Risk Assessment Conference).
- health & wellbeing support;
- confidence building.

Our domestic abuse services maintain strong working links and formalised protocols with partners such as West Midlands Police, housing departments, children's services, adult safeguarding, and a range of other partners.

In 2019/20, we supported

6149

Victims of domestic abuse in the community



Group programmes

We offer a range of group programmes which enable victims to come together, learn more about domestic abuse, share their stories, and support each other.

The Freedom Programme: A course for women who want to learn more about domestic violence, recognise signs, and understand the impact on children.

The Power to Change: A course helping women to understand how abuse may have affected them, build their confidence, and recognise their strengths.

You and Me, Mum: A course which empowers women to support their children after domestic abuse.

"The course helped me to understand behaviours of abusive people and that it is not normal. It made me see that I deserve to be happy and treated with respect. It gave me courage and confidence that I needed."

"I feel like I was a bird, trapped in a cage not knowing that I can fly. Now I know I can fly."

Domestic abuse and health

ED Advocacy Project

Since 2015, we have offered domestic abuse support in the emergency departments (EDs) at Sandwell and City Hospitals, in partnership with Sandwell and West Birmingham Hospitals NHS Trust.

The project aims to improve the response to victims of domestic abuse who present at ED, including:

- Crisis response in ED, with on-site IDVAs to support victims, offering a safe space to talk, advice safety information and options;
- Pathways into long-term support;
- Staff training to improve recognition of domestic abuse, and the visibility of the issue in ED.

Over the year we supported 245 survivors of abuse across both departments. 40% of those we supported were previously unknown to services, highlighting how crucial it is to offer this safe space where people are often able to disclose for the first time.

The ED project also reaches a broad demographic – people under 20 and over 50 are more likely to be referred to us via this route than via other community-based services. The service sees greater proportions of people from Black and Minority Ethnic backgrounds than community referral routes.

NEW: ED project in Dudley

In 2019, we were delighted to win a grant from Dudley Council's Innovation Fund to offer an ED advocacy project in Russells Hall Hospital, in partnership with the Dudley Group NHS Foundation Trust. The project will launch in 2020.

"Thank you for listening and staying with me until I had the right support"

Drive & DVPP

Drive (Sandwell) and DVPP (Sandwell, Dudley and Walsall) are two projects in which we provide parallel support to victims and children where the offender is engaging in a perpetrator programme. Our support helps to ensure safeguarding is central, the voices of victims and children are heard, and they receive the emotional and practical support they need.

Iris

BCWA is proud to offer the IRIS project across Sandwell, Dudley, and Walsall, supported by and working in partnership with clinical commissioning groups (CCGs) in each area.

IRIS is a national project which works with GPs to combat domestic abuse and make the most of their opportunities to reach vulnerable victims. The project offers training and advice for GPs and practice staff on how to recognise and enquire about domestic abuse, and a dedicated support service for victims identified.

The NHS spends more time dealing with the impact of domestic abuse than almost any other agency. Doctors are often the first point of contact for victims struggling with depression, anxiety, PTSD, self-harm, and use of alcohol and drugs due to their experiences of violence. However, GPs don't often recognise domestic abuse: a survey of 1000 women in GPs waiting rooms found that whilst 41% had experienced physical abuse and 74% had experienced controlling behaviour from a partner, only 15% had any reference to domestic abuse in their medical history.

Our team of advocate-educators work closely with practice staff to reach and support vulnerable victims.

"Thank you for believing me and reassuring me. This was the first time I have spoken to someone about my situation and now I feel like a weight has lifted and can see things clearly."

Training

BCWA provides a range of training for Sandwell, Walsall and Dudley Councils on: domestic abuse; stalking; sexual violence; the trio of vulnerabilities; FGM; honour -based violence and forced marriage to enable professionals across the region to recognise and respond to victims of abuse.





Stalking

"Thanks for all your help made me more confident made me feel safer and believe in myself again"

Since 2017, BCWA has operated a stalking service across the Black Country. Originally funded by the UK Government's Tampon Tax Fund, this was the first regional specialist stalking support service in the UK.

In 2019, we were proud to expand the service across the whole West Midlands, with funding from the Office of the West Midlands Police and Crime Commissioner.

The West Midlands Stalking Support Service

Our service is for both women and men who are experiencing any kind of stalking, whether or not they know the perpetrator or have been in a relationship with them. We work closely with West Midlands Police to improve victims' experiences within the criminal justice system and secure better outcomes for them.

In 2019/20, we supported

171 Victims of stalking through one-to-one casework
274 Requests for advice and information



"You cannot truly appreciate what this service offers people until you are in a situation where you need them. I was frightened, I didn't know what to do and I felt alone. All I knew was that I needed help to keep my son and I safe. Women's Aid helped me through the most traumatic time of my life."

Support for victims

Our service aims to intervene with victims as early as possible to prevent stalking behaviour from escalating. Our specialist Independent Stalking Advocacy Caseworkers (ISACs) offer one-to-one practical and emotional support including:

- Specialist risk assessment, safety planning and risk reduction, helping victims to look at the stalker's behaviour to develop safety plans;
- Helping victims to understand the criminal justice process, explaining how to report to the police, what kind of evidence police will need, and exploring how victims can safely gather evidence to assist police with their enquiries;
- Support through the legal process, at court and afterwards;
- Working with local safeguarding arrangements including MARACs, social care, health partnerships, community safety partnerships, enabling us to provide effective coordinated support where victims need it;
- Advocacy with other agencies, e.g. helping victims make safety plans with their workplace, school or housing provider;



Specialist advocacy

Stalking is an extremely complex, area, requiring an in-depth understanding of a perpetrator's behaviour patterns and motivations to make clear the risk victims face. Our team are trained to use a number of specialist tools, including the SRP (Stalking Risk Profile), SASH (Screening Assessment for Stalking and Harassment) and Dr Jane Monckton-Smith's Homicide Timeline to profile perpetrators. This expertise is invaluable in our advocacy with agencies such as police and probation, to help them manage offenders, address stalking behaviour directly and safeguard victims.

"West Midlands Police recently began conducting ODOC (one day, one conversation) conferences around serial perpetrators of domestic violence... [BCWA has] provided advice and support...knowledge and information which has been invaluable and has allowed us to make a better informed judgement on the decision making process around those identified as serial perpetrators of domestic abuse."

Tracey Inskip Blyde West Midlands Police Offender Management

We also work with strategic partners to inform priorities and embed a quality response to victims of stalking across the region. In January 2020 we held a service user consultation attended by Assistant Police and Crime Commissioner Waheed Saleem, to share key issues for victims, particularly the need to improve the frontline police response, and the need to retain victims' services.

We continue to be part of the National Stalking Consortium, collaborating on national awareness campaigns including National Stalking Week.

Training and awareness

We offer training to a huge range of organisations to improve identification stalking and help victims to get support. Our team also attend community events and carry out poster, leaflet and awareness campaigns to reach the community. In 2019 we also offered a range of cyber safety training events with cyber security expert Brian Askew.

"It was really informative and I could start to identify links with my own cases." Probation officer



Cyber surveillance tools displayed at a training event

Conferences and events

In April 2019 we held our second regional stalking conference, sharing the achievements of the service since its launch, and hearing from speakers including: Cath Hannon, West Midlands Police and Crime Commissioner's Victims' Commission, Inspector Jennifer Bean, single point of contact for stalking, West Midlands Police; Nick Gazzard, The Hollie Gazzard Trust; and Tia Smith, learning coach for force contact, West Midlands Police.

We were also invited in November to take part in Staffordshire Police #letstalkstalking campaign, presenting at their conference and featuring in a media campaign to emphasise FOUR – Fixated Obsessive Unwanted Repetitive – an easy way to self-identify stalking behaviour.



Inspector Jennifer Bean presents at our regional stalking conference

Rape and Childhood Sexual Abuse

Our team of ISVAS (independent sexual violence advisers) support both male and female survivors of rape and sexual abuse across the Black Country; in **Sandwell, Dudley, Wolverhampton and Walsall**. The service includes specialist advocates who support child and adult victims of childhood sexual abuse.

Whether or not survivors choose to report to the police, we can offer:

- someone to talk to in confidence;
- emotional and practical support and advocacy;
- access to specialist counselling;
- information sharing to help survivors make decisions that are right for them, including how the criminal justice system works and what happens if survivors choose to report to police;
- support and advocacy through the legal process working with police, CPS, courts, and witness care;
- support and information for family and friends.

The support of an ISVA is instrumental in helping survivors of abuse overcome trauma and move on with their lives. The service is an essential partner for the regional SARCS (sexual assault referral centres).

“The service is very valuable to women. I am a qualified professional woman with a career but I was still in need of counselling for things that happened to me as a child and young adult. The support I received help me grow into a strong woman. I could not have done this without the service.”



Criminal justice

ISVAs play a key role in helping survivors to access and engage with the criminal justice system. Police investigations and case progression can be lengthy and some survivors face up to a two-year wait from report to court. This time-frame can be traumatic and frustrating, which exacerbates existing trauma. ISVAs ensure that clients are updated on developments, supported with investigation requirements, feel emotionally supported and prepared through pre-court visits for giving evidence.

Our service managers meet regularly with West Midlands Police to discuss issues affecting survivors, strengthen referral pathways, and gain clarity on police processes to keep survivors informed. Clients who are better informed are less likely to feel helpless or disengage from the criminal justice system.

Expanding service to Walsall

In 2020, we were extremely pleased to expand our rape and sexual violence services to also offer support to adults and children in Walsall, with funding from the Ministry of Justice.

We are also consulting with Walsall Council on their new rape and sexual abuse needs assessment and strategy.

"Your service has helped when every other professional told me my case was too complex. I am able to process my emotions a lot better since receiving help from BCWA. I am able to think before I act which I was unable to do before."

ISVA client

Specialist men's support group

In autumn 2019 we ran a pilot specialist support group for male survivors of sexual abuse, facilitated by a specialist counsellor. Each session followed a theme, such as reaction to trauma, anger, masculinity, grooming and cognitive distortions. These issues were introduced to encourage self-reflection and a group-led discussion.

The feedback was extremely positive, all members said that being able to talk with other men who had been through similar experiences helped them through feelings of isolation, shame and guilt. They said that the group helped improve their self-esteem, to feel that the way they coped was 'normal' and that they should not feel ashamed of what happened to them.

All group members have found this powerful: reporting reduced feelings of low self-esteem and self-blame, realizing that there is a normality and similarity to some of their coping strategies, impact and thought patterns has helped reduced individual anxiety.

"The group has been massively important to me and saved me from plummeting into the depths of depression. Meeting the fellow group members has been very liberating in that we have been able to share each other's traumatic events and been a source of support and understanding"

male support group member

Visit from Wendy Morton, MP

In January 2020, Wendy Morton MP, Under Secretary for Justice came to meet with and consult staff and survivors at BCWA about the work of ISVA services and challenges faced by survivors both inside and outside of the criminal justice system. Following his powerful input at last year's AGM, one of the men from our male survivors group came and spoke movingly to her about his journey through our services.



L-R: BCWA Trustee Bozena Benton, BCWA Chair Karen Dowman, Wendy Morton MP, BCWA CEO Sara Ward

Support for parents

Our CHISVAs (children's ISVAs), as well as supporting child victims of abuse in their own right, also offer essential support to parents. Below, a parent talks about the difference this has made to her family:

[CHISVA]'s support has genuinely been a lifeline to us. There are times when I have felt almost consumed by self doubt and worrying how I can possibly support my daughter through all she has suffered. [CHISVA] helped our whole family with her incredible skill and compassion, uplifting and encouraging me when I felt exhausted and giving sensible practical advice on how to deal with difficult questions my child was asking... The support has been steady in a non obtrusive way as [CHISVA] double checks we are managing - but she does this so sensitively too, always putting our daughter at the centre of everything and mindful of taking things in her own time and equipping us as her parents to support this...[CHISVA] has helped ease some of the guilt and shame around what has happened and given us hope that in time some healing may be possible....I am genuinely unsure about how we would have managed without your service."

Accommodation Services

Refuge services remain at the heart of BCWA, offering secure accommodation to victims and their children who have fled domestic abuse. We provide a safe, supported environment where they can start to rebuild their lives and look forward to a life free from violence. Our refuge services are commissioned by Sandwell Council.

Over the years we have developed a diverse range of accommodation which enables us to meet individual needs, including:

- Our main refuge where residents have self-contained flats, with 24-hour staffing;
- A shared house with communal facilities;
- A refuge which offers self-contained supported accommodation to vulnerable single homeless women;
- Five dispersed safe houses in the community.

Our refuge services have been rated **Level A** in the Supporting People Quality Assessment Framework.



In 2019/20, we supported

115

Women through accommodation services

77

Women with 152 children in refuge.

381

Referrals we had to turn away due to lack of space

No two women's needs are exactly the same, and refuge staff develop responsive individual support plans which include:

- personal safety information;
- support with criminal and civil matters;
- support around safe child contact;
- support around safe housing options;
- referral to other services;
- support to access benefits;
- immigration support.



Kathryn Stanczyszyn ✓
@stanchers

Following

All this week @bbcwm - @BCWomensAid is seeing a big rise in referrals and I've been given access to one of its refuges to hear the stories of the women living there. Today the woman who's son became her abuser after years of watching his father.

BCWA also works in partnership with other professionals and agencies including solicitors, social workers, health professionals, children's centres, Early Years Teams, immigration services, alcohol and drug services, education, emergency services, UKBA, local churches and other charitable organisations to meet women's needs and protect their rights.

Activities and celebrations

Throughout the year we run a range of activities for women and children in refuge to have fun, make friends, spend healing time together, as well as learn and take part in workshops. This year, our packed timetable included:

April 2019 - Bouncy castle fun day, Easter bonnet making and Easter egg hunt.

June 2019 - Refuge theme park trip; our families had a wonderful day out, with transportation, park entry and lunch provided by kind donors.

July 2019 - Holiday children and families' activity programme, including drama workshops, sports coaching sessions, drumming workshops, summer celebration fun day.

August 2019 - Seaside trip to a location chosen by residents. Throughout the year, a bucket and spade fundraising appeal raised funds to provide transportation, swimming costumes, buckets and spades, spending money and coach grab bags.

Oct 2019 - Diwali party: food and celebrations, with our refuge decorated with lanterns made by the children.

Oct 2019 - Go Purple day: Our residents made and sold cakes and we invited staff and partner agencies to come and buy them. We also had a raffle and various stalls such as nail art and henna.

Dec 2019 - Magic Christmas trip to a theme park to meet Santa, with transport, park entry and lunch provided by donors. We also held a Christmas fun day in refuge, with Santa's grotto and a bouncy castle.

Feb 2020—Safety workshops for children, and a fun circus performance.

You said, we did

We regularly collect feedback and suggestions from residents in refuge, and actions we took in response to feedback this year included:

- Introducing monthly housing surgeries with Sandwell Council officers to help with move-on options
- Free WiFi for residents, funded by donors.

"I liked how you talked to us, making us feel welcome and involving us in the scrapbook activity"



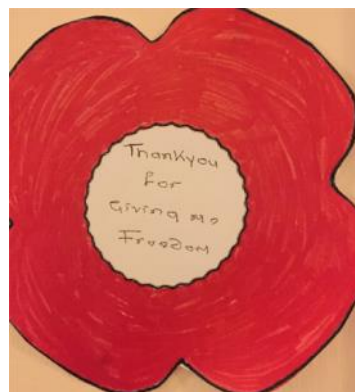
Children's craft in refuge

"The girls enjoyed dressing up and felt happy on the day, this made me happy as well."



Bouncy castle fun day

"It was a lovely day, all the women at the refuge sat together and we had lovely chats with food"



Remembrance Sunday in refuge, looking at what makes us thankful

"Fantastic, I loved it. It made me feel stronger. I understand that the day was about our freedom and happiness... the kids really enjoyed themselves. It gave us the opportunity to share our problems and experiences"




Creepy cupcakes on Halloween

"The session was delivered brilliantly in a fun way, everybody was laughing and dancing, this was really good to see"



Santa's grotto in refuge



Children and Young People

Our specialist children and young people's services support young victims of rape, sexual assault, child sexual exploitation (CSE) and domestic violence. This is a growing service as we work with local, regional and national funders to develop multi-disciplinary support for some of the most vulnerable young people in our communities.

Our team of specialist young people's advocates offer a range of support to vulnerable children, including:

- A non-judgemental, safe space to talk and listen;
- Emotional and practical support and advocacy;
- Risk and safety planning;
- Help to understand and come to terms with what has happened;
- Work to raise confidence and self-esteem;
- Access to counselling;
- Support through the legal process and at court;
- Support to engage with school, children's social care, youth offending, and other professionals;
- Attending case reviews and multi-agency briefings to ensure young people's voices are heard.

Domestic violence

We support children who have lived with domestic abuse in the home in Sandwell and Walsall, offering advocacy services integrated with our adult team to wrap support around the whole family.

Sexual violence

Our specialist CHISVAs support young victims of rape and sexual abuse across the Black Country (see p. 10).

In 2019/20
we supported

780 children and young people

440 girls  **340** boys 

677 children who had lived with domestic abuse at home

103 young people who had experienced teenage relationship abuse, grooming or CSE

CSE

We support girls and young women who are at risk of or affected by sexual exploitation, grooming or gang related abuse. As part of the Home Office Tackling Gangs and Serious Youth Violence Strategy BCWA have been funded for several years to deliver these services across the Black Country.

Living in a home where there is domestic abuse can cause trauma which lasts a lifetime. In 90% of cases, children are in the same or the next room when violence occurs. Even where children do not directly witness violence, coercive and controlling behaviour in the home can cause very serious emotional, social and even physical effects. These include anxiety, depression, behaviour problems, difficulty forming relationships, and difficulty achieving at school.

Our Future: supporting young people affected by domestic abuse



In 2019 we launched our new flagship project: Our Future, supported by funding from the Home Office Children Affected by Domestic Abuse fund. Our Future works with schools and colleges

to support children and young people aged 5-18 who are affected by domestic abuse at home.

Our Future supports a new police operation called Encompass, which notifies schools when police have attended a domestic abuse incident at a child's home. We offer advice and support for both school and child to create a safe space and ensure children are supported during a very difficult time.

Our Future is available to all schools and colleges across Sandwell, Dudley, Walsall and Wolverhampton, offering:

- Advice and training for staff on domestic abuse, support and safety planning for children;
- Direct one to one support for children, aiming to help them cope, build their self-esteem, improve their safety and help them engage at school;
- Group support to help children express their emotions and understand healthy relationships.

Group work

We offer a range of group programmes for children and young people of all ages, including:

Helping Hands and Inside Out: to help children cope with and recover from their experience of domestic abuse. The themes include developing children's self-esteem; gender, stereotypes and assumptions; feelings and emotions; the right to feel safe; warning signs; safe adults; others have the right to feel safe with us; secrets and surprises.

TRAPPED: group awareness and resilience-building, raising awareness of domestic abuse, teenage relationship abuse, grooming, CSE and online safety.

Voices: a programme for young women which addresses trauma as a result of physical, emotional, or sexual abuse; physical neglect, or exposure to domestic violence.



TO CALM DOWN, I CAN NAME:

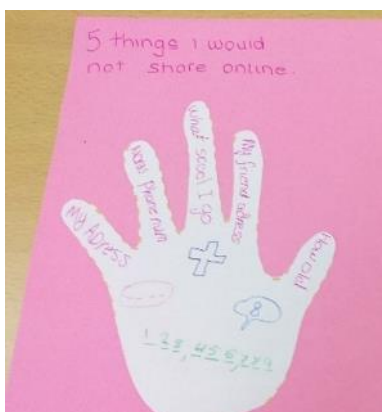


DO YOU NEED TO TALK?



Creative interventions

Our young people's advocates use a variety of creative methods with children, to help them communicate about their feelings and fears, including emotion stones, play-doh to model family members, worry dolls, dreamcatchers, and crafts.



Women's Justice Services

"My time with [support worker] was invaluable just to have a woman to talk to about what I had gone through and receive really good sound advice. She helped me to understand why we react to certain situations and how I can prevent it from ever happening again. I wasn't judged at all. I was helped and for that I will always be truly grateful."

BCWA Women's Justice Services offer holistic, person-centred support to women involved with the criminal justice system and those with complex needs in the Black Country and Birmingham.

The Mariposa Project

Mariposa is a specialist project for women who have offended in Sandwell, Dudley and Birmingham, commissioned by Staffordshire and West Midlands Community Rehabilitation Company. We run a number of core programmes designed to help women improve their lives and avoid offending in the future. **Women taking part in Mariposa reported 20% improvement in sense of autonomy, 32% improvement in feelings of purpose and 25% increase in positive support networks.**

New Chance

New Chance is an early-intervention project commissioned by the Office of the West Midlands Police and Crime Commissioner, which provides diversion from custody for women in Sandwell and Dudley, with practical and emotional support to help them move forward and avoid future offending.

In 2020, a University of Birmingham evaluation found a 16% reoffending reduction for women supported by New Chance, compared to a control group.

The Red Project

The Red Project, supported by the Tampon Tax fund between 2017-20 was a specialist outreach and support project for women involved in sex work and at risk of sexual violence. It was run across the West Midlands in partnership with CRASAC and RSVP.

In 2019/20, we supported



Assist

ASSIST was a partnership project with Birmingham and Solihull Mental Health Trust and Anawim, funded by the Home Office Transformation Fund 2017-20. ASSIST offered support for women who have complex needs, with one to one casework and access to psychological interventions to address mental health needs and assist them to stabilize their lives.

In 2020 AVA (Against Violence and Abuse) carried out an evaluation of ASSIST which identified a range of positive outcomes in relation to mental health, housing and economic wellbeing and highlighted the success of ASSIST's assertive outreach model in reaching women who had struggled to engage with other services.

New for 2020: support for homeless women

In 2020 we were extremely pleased to win a grant from Homeless Link's Ending Women's Homelessness Fund to develop a new homelessness support service across the Black Country.

Launching in spring 2020, the Willow Project will support women who are sleeping rough, hidden homeless, in supported housing, refuge or homeless accommodation, or at risk of homelessness. The project will work to locate and maintain safe accommodation. We will also offer a range of training for partner agencies and link best-practice with other projects across the UK supported by the fund.



Therapeutic Services

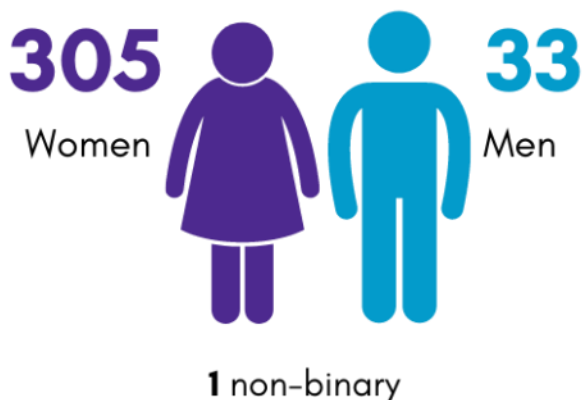
At BCWA, counselling underpins and supports our sexual violence and domestic abuse support services. Counselling helps victims of abuse to develop more effective coping strategies and overcome the issues arising from these potentially devastating experiences.

We also offer counselling for victims of modern slavery and human trafficking, working through interpreters, and specialist counselling for children and young people. Our team of counsellors work within the BACP (British Association of Counselling Practitioners) ethical framework for practice.

We also offer a specialist counselling pathway for victims of rape and sexual assault referred through the adult and paediatric SARCs (Sexual Assault Referral Centres) in the Black Country, in partnership with the West Midlands Sexual Violence Providers Consortium.

In 2019/20, we supported

339 Survivors of abuse accessing specialist counselling



““Therapy has been positive as I have started to seeing myself in a positive light. I no longer feel ugly and uncomfortable looking at myself.”

Counselling client

“This has been the best thing in my life, I am now so happy with life, they are a great team.”

Counselling client

Research

From 2020 onwards, we will be participating in the MESARCH (multi-disciplinary evaluation of sexual assault referral centres for better health) research project alongside Horizon SARC. This groundbreaking four-year research project will follow 1500 survivors nationally over a two-year period to determine how their experience and the support they have received has affected issues relating to mental health, PTSD and quality of life. The research aims to raise awareness of the effects of sexual abuse and violence and also recognise all the agencies that play a vital role in supporting survivors. Survivors will be recruited to take part via SARCs and voluntary sector support services, and we will be working alongside the SARC to recruit and support survivors taking part.

“I was able to understand my boundaries as before I didn’t know what my boundaries was or what it meant. The service has been brilliant and made me realise how good it feels to open to someone.”

Counselling client



Modern Slavery

BCWA's Modern Slavery Support Services offer refuge and outreach support for victims of modern slavery and international human trafficking.

Victims are referred through the NRM (National Referral Mechanism), which is the UK Government response to modern slavery.

We have operated this service since 2011, as the West Midlands-wide sub-contractor of the Salvation Army, which administers the national service on behalf of the Home Office.

International trafficking

In the last year alone we supported people of 44 different nationalities. The most common countries of origin (making up half of victims supported) were Albania, India, the UK, Romania, Vietnam, China, Pakistan and Eritrea.

We have also supported people from Sudan, Ethiopia, Iran, Namibia, Poland, Ghana, Hungary, Sri Lanka, Burma and many others.

Rebuilding lives after trauma

Our modern slavery service includes support for women, men and families through the NRM process. We offer a safe refuge for women and children only, and outreach support for women, men and families.

Survivors of modern slavery come to BCWA having experienced some of the worst trauma and exploitation that an individual can face.

Our support team is specialist in working with people who have been severely traumatised, and work with passion and compassion to support them on their journey from victim to survivor.

In 2019/20
we supported

245

victims of modern-day
slavery

We offer a range of emotional and practical help including: counselling; support with healthcare (many female survivors come to our service late in pregnancy without having had any pre-natal care; survivors who have been sexually exploited are at high risk of infections or HIV); support to understand their legal rights; support with the criminal justice system and their NRM case; links to local services and courses to develop confidence and independence; and support with their next steps, whether it is safe for them to return home or if they need to claim asylum.

"Thank you for referring me to organisations I could never reach on my own, for understanding me the way I was and for letting me see life in a different perspective."

"You are pillars of many hopeless lives. Thank you for giving them hope and a future."



BCWA staff take part in a social media awareness-raising campaign for Anti Slavery Day

National, regional, and local strategy

As well as supporting survivors, we contribute to the wider fight against modern-day slavery, advocating for improvements in the response to vulnerable victims.

BCWA has contributed to the Human Trafficking Foundation's Long-term Support Group, NRM Review, DWP Enquiry into modern slavery, and acted as expert consultants to the West Midlands Modern Slavery Strategy and West Midlands Police Multi-Agency Policy and Procedures. We represent survivors on the West Midlands Anti-Slavery Network, Human Trafficking Advisory Foundation Forum, and PAN West Midlands Multi-Agency Group.

"This service have supported me a lot. Took me from stagnant life to seeing life from another dimension. Opened my eyes and given me loads of confident. Thank you for resurrecting my life. By faith, hope and the confident I have acquired from this service I believe the future is bright."

Modern slavery outreach and engagement: combatting sexual exploitation in the West Midlands

Our new outreach service, funded by the Office of the West Midlands Police and Crime Commissioner, works to improve the identification of and response to victims of modern slavery who are sexually exploited.

We analyse and collect evidence on sex work across the West Midlands, both online and offline, to track activity and monitor signs of exploitation and trafficking.

We work closely with West Midlands police and agency partners to gather and respond to intelligence.

We also work with individuals, communities and businesses to educate and raise awareness on the topic of modern slavery/human trafficking with the aim of identifying potential victims and to refer them into the NRM.

Building Better Lives: £800K grant for refuge

In 2019 we were delighted to be awarded over £800k by the Heart of England Community Foundation to develop and expand our modern slavery refuge. The funding will enable us to purchase and refurbish our

current refuge, which offers 13 flats for women who have escaped modern-day slavery. We will also build a multi-purpose extension which will enable us to offer more therapeutic work and group activities to help women rebuild their lives. The new space can be used as an emergency reception centre for women rescued from slavery.

"The work of Black Country Women's Aid is relieving the pressures felt by those feeling the pinch of the housing crisis most. Being able to support them with our largest grant ever is something that both I and the Heart of England team are immensely proud of, and we look forward to seeing the immensely positive impact that this project has."

Tina Costello, Chief Executive at Heart of England Community Foundation.



Sara Ward with Tina Costello from Heart of England and Rose Makilagi, Service Manager of BCWA Modern Slavery Services



BCWA's staff team

Our strength is in our wonderful staff team, who work with drive and passion to change policy, practice and people's lives. BCWA has 154 staff working across our four community offices in Sandwell, Dudley, Walsall and Birmingham, and range of refuge accommodation. Each of our skilled staff places survivors' voices at the heart of all they do, whether they work in direct support, administration, management, performance, communication or fundraising.

In June 2019 we got together for a whole-staff development and celebration day. Our teams held presentations on their services, sharing survivor stories and new developments. We held peer awards, in which staff nominated colleagues for awards including: employee champion for those who support colleagues; client champion for inspirational work with survivors; duct-tape award for those with a solution to fix anything; and the sunshine award for the most cheerful attitude. The comments staff made about each other's skill and dedication were extremely inspiring, and show the level of peer support and teamwork at BCWA.



Employee champions:

"She makes things happen and has solutions for everything"

"No matter what, she will always do her best to support her team, she will look at what can be re-arranged just so she can assist someone else"

"Her knowledge is amazing, nothing to much trouble and she will always give help when needed."

"As a student she has taken me under her wing and instilled in me the ethos and values of BCWA. I have had a chance to observe her with her clients...she always has a smile and takes pride in the work she does. She makes a difference to clients lives just from her positivity."

"Always welcoming to new colleagues who want to shadow, always available on the end of the phone for advice or a debrief. A great support."

Client champions:

"Always trying to get more information and results for her clients. Never scared to ask questions or get further advice to provide the best support"

"Always strives to improve knowledge to support clients and also tools to aid recovery. Passionate about support but also maintains a healthy work-life balance. Goes above and beyond with support and creative to meet individual client needs. Always on hand to support colleagues with her wealth of experience."

"She never gives up even if someone is struggling to engage she motivates and encourages and doesn't give up. You can hear her on the phone to her clients in the office and she reminds them they are worth it".

Partner champions

"She has worked so hard this year within the stalking service and learned so much that partners really value her and look to her as an expert now, she knows how to develop partner relationships in a skilful way and this has helped us to continually develop the service."

"She is constantly on the go and raises awareness of BCWA. She is always looking for ways to help clients and works with other agencies to raise funds for clients"

Above and beyond

"She is so supportive, she is straight down the line she says what needs to be said and gets on with it, she gives



100% at work and then never walks out of the office if someone needs her help, she steps in to whatever she can even if it is last minute...she will say "let me see what I can do" and she does"

"Goes above and beyond for staff, clients and the service. Incredibly passionate about service being the best it can be. Always supportive of people's wellbeing and recognises that it is vital."

"She is just amazing. If you're struggling, she won't beat around the bush with advice, but she says things in a really kind way"

"She has a great attitude to any project, her enthusiasm is infectious and wills you to make the best of yourself which make you want to do the best for the service"

Duct tape: those with a solution for anything

"She is always willing to help out and muck in: finding properties, moving furniture, supporting staff when they need it... on top of her actual job!"

"I'm pretty sure she knows everything! Any time I have a question or a problem she is available to help."

Bunsen burner: for staff with ideas

"Since day one has had an innovative approach. Her desire to always achieve the very best means that she is always explores, develops and has fantastic ideas. Incredibly modest and does not give herself the credit she deserves for it."

"She always has a plan, she always uses her imagination and creativity to execute the plan. she is always looking at ways we grow."

First responders: ready to go when needed

"They do amazing work responding to victims in a crisis and working in very challenging hospital environments. Their work is right at the sharp end of domestic abuse and their engagement skill mean that many people reach support who wouldn't have found it otherwise. The project wouldn't work without their skills!"

"Always willing to put her hand to anything and always manages to balance it all...Since day one she has been there to support me whenever I have asked in an instant. Makes time management and prioritising look like the easiest job in the world."

Corporate services

BCWA's corporate services include development, training, volunteering and fundraising to support the frontline work of our organisation.

Development: upcoming projects for 2020-21

During the year we worked with a range of partners and funders to develop new projects and services which will launch in 2020. These include:

Black Country FDAC

BCWA will be a key partner in the new Black Country Family Drug and Alcohol Court (FDAC). This is an evidence-based innovative approach to the problem of parental substance misuse which impacts parenting. FDAC is a specialist court operating within the framework of care proceedings. The specialist FDAC team, which includes substance misuse and domestic abuse practitioners and social workers, advises the court and works with families in a problem-solving approach, to promote parental/family recovery and ultimately safeguard children and young people.

Walsall Family Safeguarding

BCWA domestic abuse advocates will be integrated into Walsall's new Family Safeguarding Team. This is a whole-family approach which enables parents to access one-stop support to help them deal with the complex issues of domestic abuse, mental health and drug/alcohol abuse that harm their lives and those of their children. First developed in Hertfordshire, Family Safeguarding is being piloted across several UK local authorities, with Walsall's project the first to go live.

Student placements

We offer a number of social work student placements each year, in partnership with local universities.

This gives social work students the opportunity to experience social work first-hand, working across our services including in refuge, stalking support services, and community domestic abuse services.

Our Future

We were pleased to receive notification from the Home Office Children Affected by Domestic Abuse Fund that our children's service Our Future, will be re-funded for 2020-21.

The Willow Project

Our new outreach and support service for homeless women and those at-risk of homelessness, funded by Homeless Link's Ending Women's Homelessness Fund, will launch in spring 2020.

Peer mentoring

We have received a community grant from Sandwell Vision 2030 to develop a peer mentoring programme. This will develop the skills of local survivors of abuse and violence to offer support to others. We will offer an OCN-accredited course and a range of support so peer mentors can offer group support and befriending.

Modern Slavery capital project

In 2020 we will break ground on the new extension to our modern slavery refuge, part of our capital project funded by the Heart of England Community Foundation. The extension will feature a new group room and counselling space so we can increase our activity and support programme for our residents.

"As a student social worker, I had the opportunity to complete my practice placement with BCWA within the stalking service. I believe this was a unique learning experience that I was very lucky to have and this opportunity has expanded my knowledge in more ways than one... This service not only provides the clients with emotional support, but they empower [them] by giving them advice in how they can "fight back" to get the justice they deserve."

social work student

Volunteering

Volunteers make a real difference to the work of BCWA. Our volunteers work with us on facilitating groups, counselling, administration, and supporting our fundraising campaigns. Some volunteers go on to jobs in social work, healthcare, and some enter employment with BCWA.

Volunteer stories:

"I started volunteering at BCWA in August 2019..Most of my volunteering was supporting the counselling service with new referrals, session outcomes and closures but I also supported...with domestic abuse and sexual violence referrals... archives, creating training packs, and a day helping in finance. I attended an SV training event during my volunteer period as well as an event on crime and young people. I also volunteered several days at one of the refuges collecting food donations and helping with tasks in the office. This experience definitely helped me get the job I secured externally in January 2020 and by August 2020 I was very grateful to have returned for full time employment at BCWA as an administrator for the therapeutic services!"

Jodie, Therapeutic Services Administrator

"I was made redundant in 2013... I wanted to maintain some constructive involvement in the community, with the help of my daughter, found BCWA who were wanting volunteers to do administrative work.

The role involved inputting referrals onto 4site, the organisation's system to enable the SPOC [single point of contact] team to contact the victims, offering help in resolving their abuse.

Since commencing the voluntary work for BCWA, I have become aware of the different types of abuse being suffered by victims and ongoing...I have been with BCWA for almost 7 years and still find it rewarding; and enjoying the work knowing that the administrative support I do enables the team to provide quality support to the victims and is valuable to those suffering at the hands of perpetrators."

Corilee, Volunteer SPOC Administrator

Training

Black Country Women's Aid carry out a range of training for professionals to help them recognise and respond to domestic abuse, sexual violence, stalking, honour-based violence, and modern-day slavery. Just some of the organisations we worked with this year include: Sandwell, Dudley and Walsall Domestic Abuse Strategic Partnerships; West Midlands Police; Sandwell and West Birmingham CCG; Sandwell and West Birmingham Hospitals NHS Trust; and many more. We also offered training for schools across the Black Country to help them support children affected by domestic abuse in the home.

"The stalking and harassment input we receive from Black Country Women's Aid, has proven to be a very successful and informative input, raising awareness with both experienced force contact call handlers and new recruits. Without this we would not be aware of all the different stalking types. ...on occasion we may have focussed on the "no evidence", but now we are able to recognise a pattern of behaviour and raise it to be investigated further"

Claire Evans, Learning Coach Force Contact WMP

"Having the BCWA Stalking team on board for the first ever MARAC Development day was hugely impactful for our audiences. Lorraine delivers excellent presentations which face the difficult realities of stalking head-on and encourage the partners involved to really think about their practice and approach to some of the low level offending that takes place in the earlier days of a stalking scenario. ... Lorraine received an unprompted round of applause on conclusion of her most recent presentation for us and that truly speaks volumes of how well-received her work is."

Laura Rogers Regional MARAC and Safeguarding Lead

"Thanks for this. The training was probably the best I have been on. It would have been nice if it was a little longer but I am bias as I enjoyed it so much."

Probation officer

Fundraising

Go Purple

2019 marked the second year of our Go Purple campaign for domestic abuse awareness month in October, with a fantastic response from local businesses and communities.

Guru Nanak Gurdwara lights up purple

Our friends at the Guru Nanak Gurudwara in Smethwick Gurdwara lit the building purple for October to support our Go Purple campaign and stand in solidarity with victims of domestic abuse.

Gurudwara President Jatinder Singh said lighting up the Gurdwara in purple was: *"more than a symbol – domestic violence cannot be ignored. To create change, we have to talk openly and acknowledge how domestic violence affects our communities, our families and our lives. We can't just turn away."*

Charity of the year: West Brom Building Society

We were delighted to be charity of the year for the region's largest building society, the West Brom. Launching the campaign, Group Finance and Operations Director Ashraf Piranie said: *"Supporting the community is integral to the West Brom and this comes across in the commitment and compassion shown by our people in raising money for our chosen charities. This year we are proud to support BCWA and its provision of essential services to those whose lives have been blighted by abuse."*

Staff took part in an amazing range of activities, from runs to bake sales, raising £22,115 to support our services and sponsoring TVs for all rooms in our refuges.



Go Purple at Guru Nanak Gurudwara: BCWA staff with Gurudwara President Jatinder Singh

Our CEO, Sara Ward said: *"I am overwhelmed by the support of our friends at the Smethwick Gurdwara... Lighting up this beautiful building purple will show the whole community that we challenge violence within the home, we stand together in supporting victims and we send a message of hope to all that there are safe spaces in Sandwell to get help and support."*



Sara Ward with Ashraf Piranie, West Brom Building Society

Special thanks to our liaison Jim King who took time to understand our work and meet staff and survivors.



Thanking our supporters

We would like to say a huge thank you to some of the many people and organisations who have supported us during 2019/20 with donations, fundraising challenges, gifts for our refuge and support in-kind:

Free Radio

Free Radio's Cash for Kids appeal has supported our Christmas campaign for the last two years; providing presents for hundreds of children and young people we support in the community. Thank you to John Stratton, Cash for Kids Regional Charity Manager - Midlands, Tom Reeves, and all of the generous Free Radio listeners for helping us make so many little people and their parents happy.



Brockmoor Foundry

Our long-term supporters help us provide wonderful presents for all the children in refuge each year employees put money in a tin each week and at the end of the year Brockmoor match that donation. Thank you for all of your support and or welcoming us into your Christmas grotto every year.



Interserve

A long-term supporter, with a staff team led by Claire Tumelty taking part in a variety of fundraising activities, as well as transforming our refuge garden.

Slimming World Halesowen

Members provide donations of toiletries, clothes, chocolates, food and cash donations all year round, as well as running raffles and dress sales. Thank you to Michaela Mucklow, Senior Consultant, and volunteer Helen Leatherland.



Freemasons

We have made great friends with all of our local masonic lodges, who offer fantastic support to our mothers and children in refuge, with Easter and Christmas gifts, and funding for emergencies. This year they also funded a day-trip to the seaside; everyone had a great time, spending money, fish and chips, buckets and spades and even the sun cream and swimming costumes provided.

Katie Newhall

Katie never misses an opportunity to promote our charity, and is always only a phone call away, helping us with a vast array of much needed items for those in refuge and for families moving out with nothing, truly priceless. Katie runs lots of raffles on her own charity page called Random Acts of Kindness Dudley.



Katie Strickland

Midwife Katie has made birthday cakes for children in refuge for over a year now, Katie also bakes and sells cakes at work to raise money for us.





West Midlands Police for Sandwell Safer 6



Hagley Women's Institute

Supermarkets

We have tremendous support from Asda, Tesco, Morrison's and Lidl all year around with donations of food, party stuff for refuge, clothing, household items and lots more.



Lapal Scout Group



Sandwell Hospital

Body Shop, Merry Hill Centre

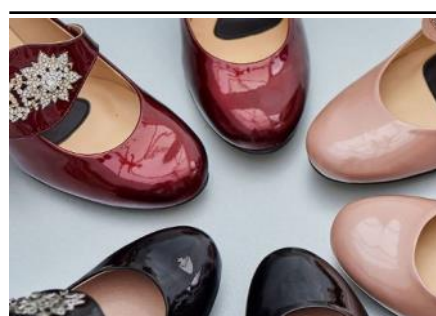
Thank you to staff and customers for donating so generously; women and children in refuge are always so pleased to receive such treats.



Clarke Transport



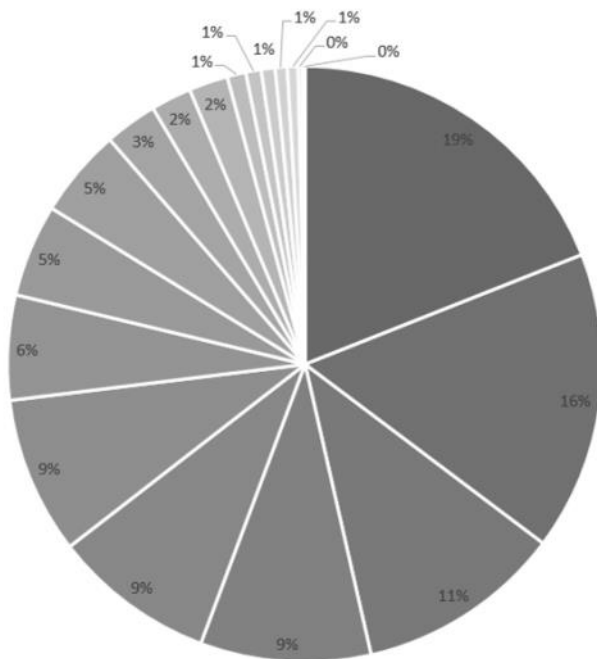
Blakemore Fresh Foods





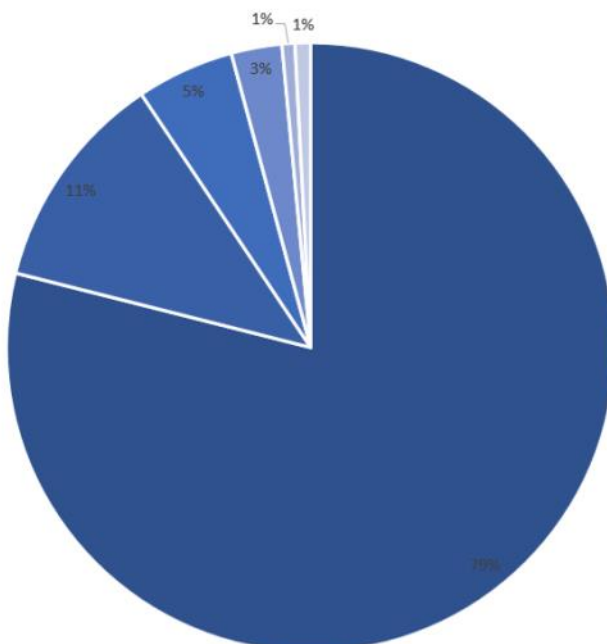
Financial Reports

Income



- Trafficking: £1,023,000
- West Midlands Police and Crime Commissioner: £874,313
- Sandwell MBC: £601,751
- Accommodation: £498,696
- Heart of England Community Foundation: £475,000
- Home Office: £459,630
- Supporting People: £305,979
- Staffordshire and West Midlands CRC: £270,507
- Walsall MBC: £259,576
- Dudley MBC: £154,006
- Ministry of Justice: £118,545
- Department for Culture, Media and Sport: £114,250
- Department for Communities and Local Government: £54,464
- Generated: £45,143
- Change, Grow, Live: £40,515
- West Midlands Police: £34,983
- Children In Need: £31,551
- Comic Relief: £12,413
- Violence Reduction Unit: £7,572

Expenditure



- Staffing Costs: £3,488,712
- Property Costs: £516,301
- Office Costs: £229,244
- Activity Costs: £118,897
- Depreciation: £30,385
- Professional fees: £36,556

Black Country Women's Aid
Landchard House
Victoria Street
West Bromwich
B70 8HY

0121 553 0090

info@blackcountrywomensaid.co.uk
www.blackcountrywomensaid.co.uk



@BCWomensAid



Black Country Women's Aid

Registered in England No. 2791788 • Registered Charity No. 1032298

Registered at the above address

Members of the Women's Aid Federation, Clinks and Agenda



**Ministry of
JUSTICE**



**west midlands
office for policing
and crime**



Walsall Council



Wolverhampton Domestic Violence Forum
Working Together to Stop Domestic Violence and Abuse



**Staffordshire &
West Midlands**
Community Rehabilitation Company



NHS
**Sandwell and West Birmingham
Clinical Commissioning Group**



**BBC
Children
in Need**